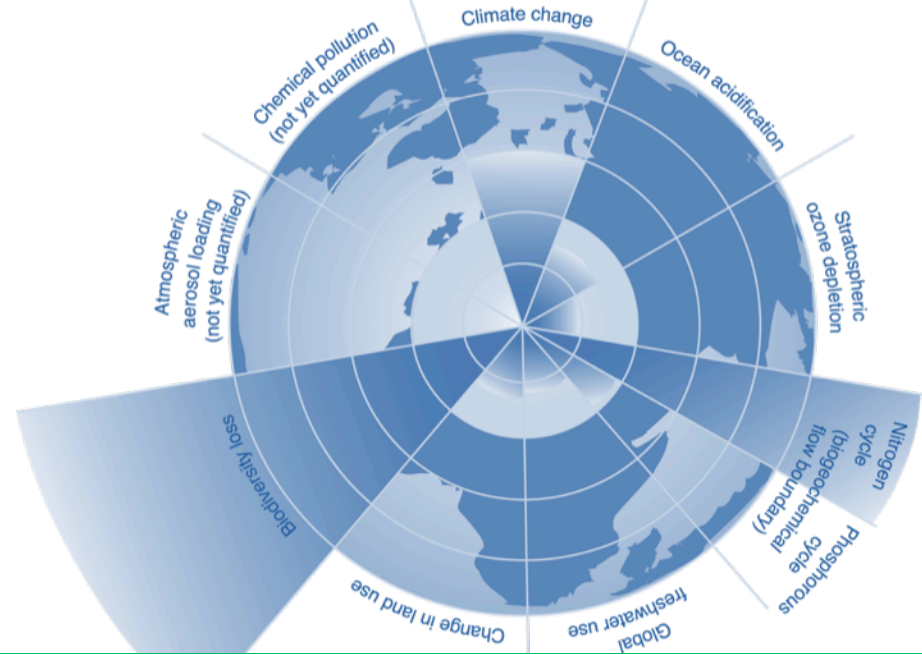
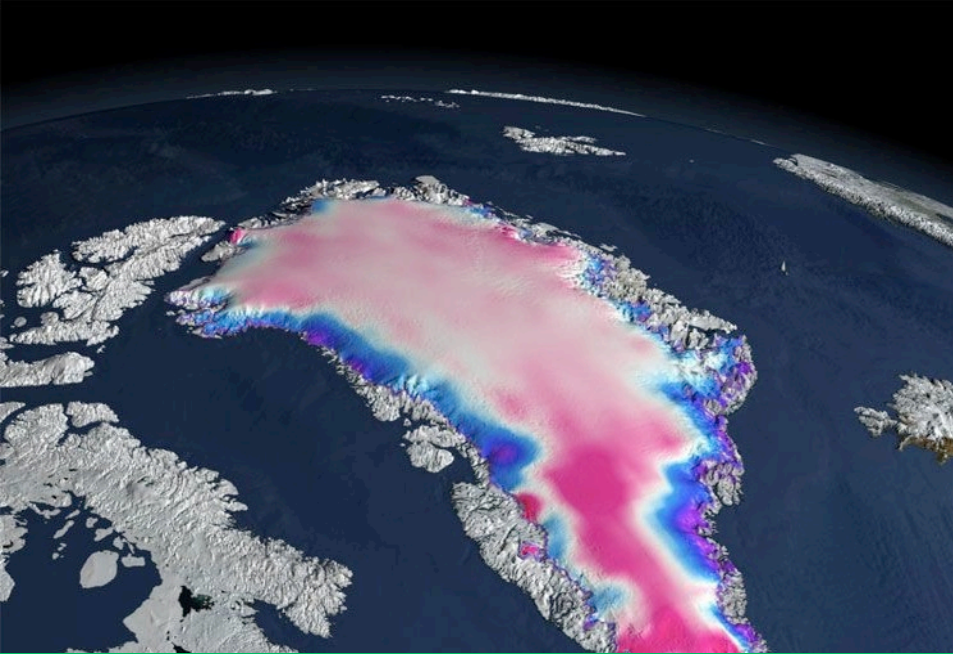


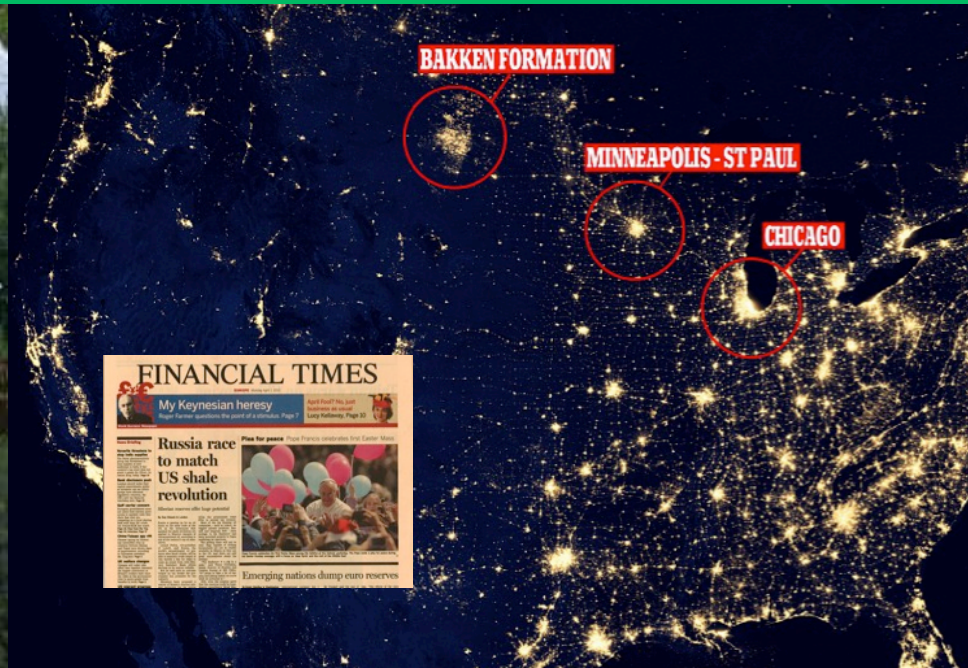
Scaling up Business Solutions through Collaboration

Peter White – WBCSD





Planet Earth in trouble



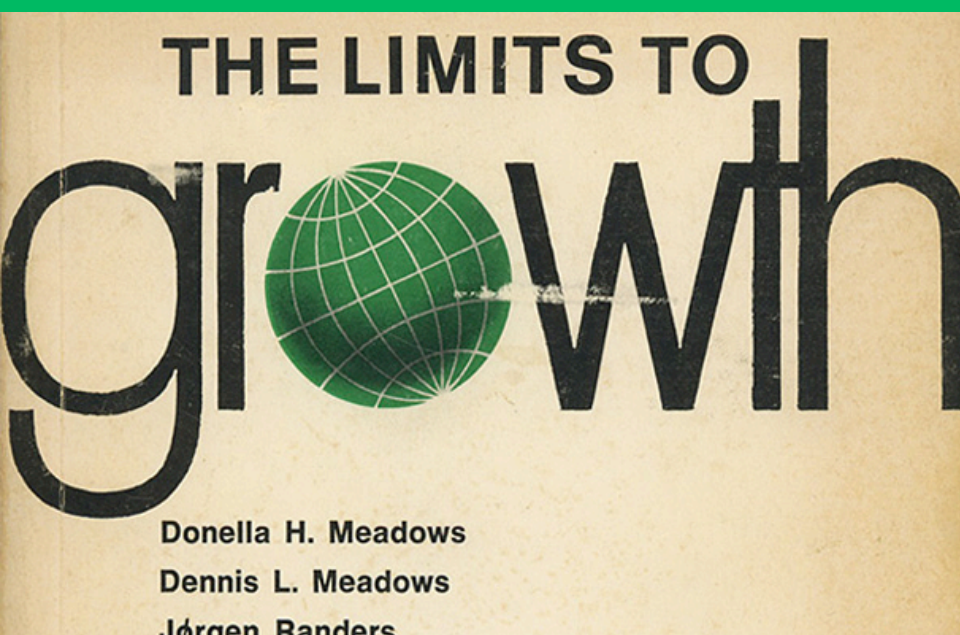


Social tensions are rising





Governments are not leading



TIME Business & Money

Magazine | Video | LIFE | Boston Bombing

NEWSFEED | U.S. | POLITICS | WORLD | **BUSINESS** | TECH | HEALTH | SCIENCE | ENTERTAINMENT

Economy | Wall Street | Tech | Small Business | Personal Finance | Real Estate | Business of Creativity | Manag

The Curious Capitalist
By Rana Foroohar

MANUFACTURING

Bangladesh Factory Collapse Will Force Companies to Rethink Outsourced Manufacturing

By Rana Foroohar | April 30, 2013 | 15 Comments

[f Share](#) [f Like](#) 403 [t Tweet](#) 249 [+1](#) 8 [in Share](#) 30 [k Send to Kindle](#)

UPDATE, May 3: On Thursday, the Walt Disney Company publicly disclosed that it is ending the production of licensed merchandise in Bangladesh following a string of garment factory accidents in the country. A letter previously issued to licensees and vendors in March revealed that Disney is ending



And on top of it all...



VISION 2050:

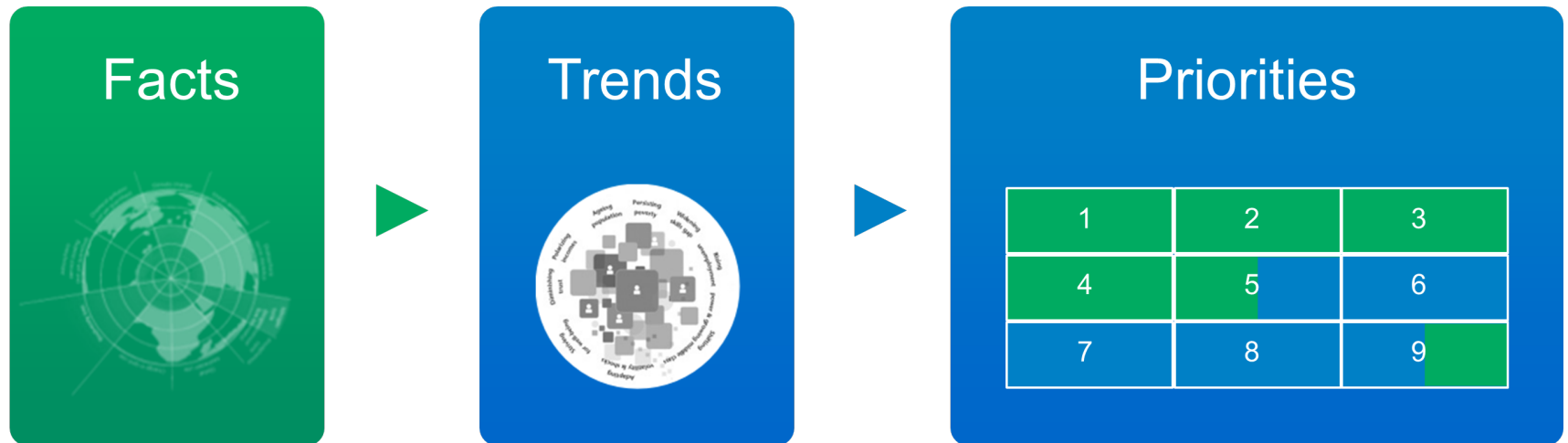
- 9+ billion people
- All living well
- Within the boundaries of the planet



From Vision to Action



Science-based Actionable Priorities



Action2020 Priority Areas



1 Climate change	2 Nutrient elements	3 Ecosystems
4 Harmful substances	5 Water	6 Basic needs and rights
7 Skills and employment	8 Sustainable lifestyles	9 Food, Feed, Fiber and bioFuel
MUST-HAVES – THE SOCIETAL GOALS FOR 2020 THAT FORM THE BASIS FOR ACTION		

Informed by
Stockholm
Resilience
Centre-led
scientific
consultation

Informed by work
of international
organizations,
research
organizations and
the Action2020
Project Team

Three Key Elements of WBCSD Strategy





business solutions for a sustainable world